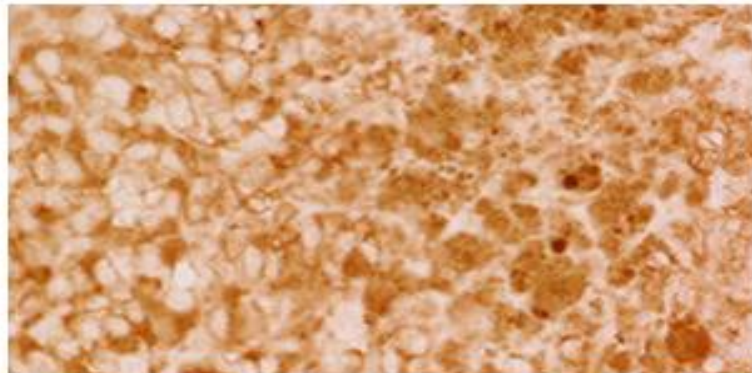


Struggling with Shades of Brown?

Pigmented tissues such as melanomas or veterinary pathology specimens present a particular challenge for immunohistochemistry because the brown color of positive staining produced by DAB, the most commonly used enzymatic substrate, cannot be easily distinguished from the brown color of pigments such as melanins, lipofuscin, or hemosiderin.



Melanoma stained with DAB. Note positive brown staining from DAB is virtually indistinguishable from the brown of tissue pigments.

Try a Substrate with Greater Impact:

Vector Laboratories offers several colors of peroxidase and alkaline phosphatase substrates for chromogenic staining that provide great contrast with pigments in tissue.

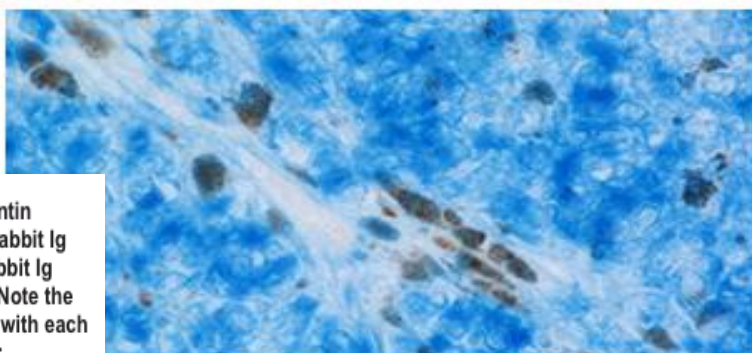
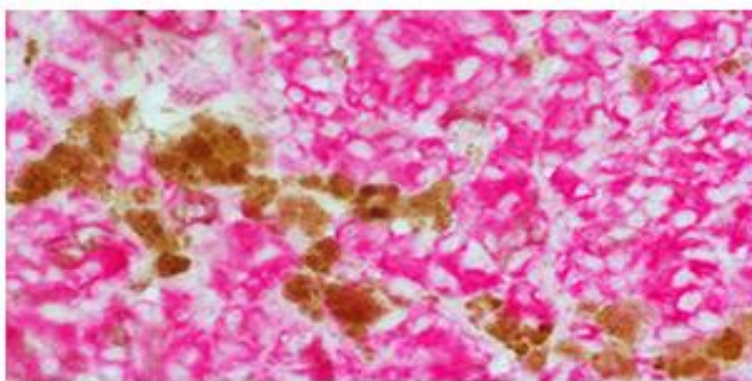
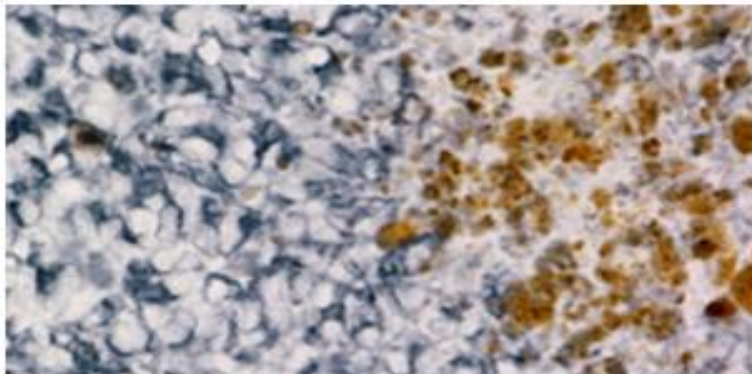
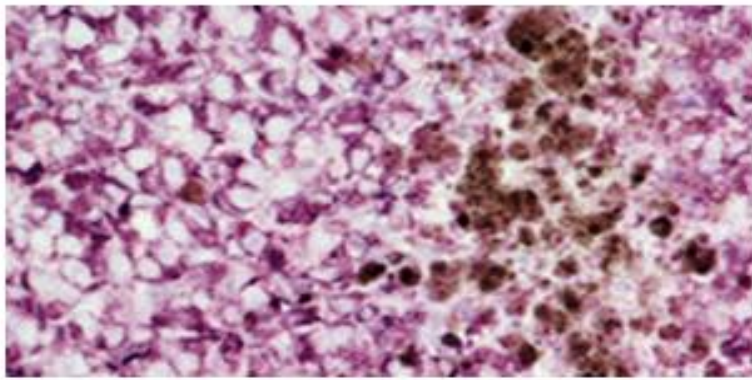
Try a **FREE** sample of one of our four substrates listed below:

- [ImmPACT™ VIP HRP Substrate \(SK-4605\)](#)
- [ImmPACT™ SG HRP Substrate \(SK-4705\)](#)
- [ImmPACT™ Vector® Red AP Substrate \(SK-5105\)](#)
- [Vector® Blue AP Substrate \(SK-5300\)](#)

Reply or email us at vector@vectorlabs.com with your mailing address and the choice of one substrate.*

More about ImmPACT™ Substrates:

- **Greater sensitivity** than conventional DAB powders or tablets
- **Convenient** - all reagents in stock solutions eliminating wait times for mixing and dissolving of powders or tablets
- **Safe handling** - reagents provided in dropper bottles
- **Optimized diluent** included in all ImmPACT™ substrates
- **Stable** working solutions for ImmPACT™ HRP Substrates (up to 14 days at 4°C).



Melanoma was stained with anti-vimentin followed by ImmPRESS™ HRP Anti-Rabbit Ig Reagent, or ImmPRESS™ AP Anti-Rabbit Ig Reagent and the indicated substrate. Note the excellent contrast of brown pigments with each of the substrates. From top to bottom: ImmPACT™ VIP HRP Substrate, ImmPACT™ SG HRP Substrate, ImmPACT™ Vector® Red AP Substrate, and Vector® Blue AP Substrate.