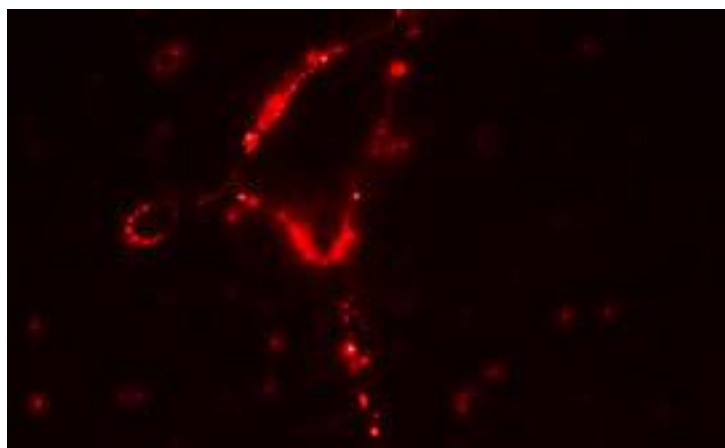
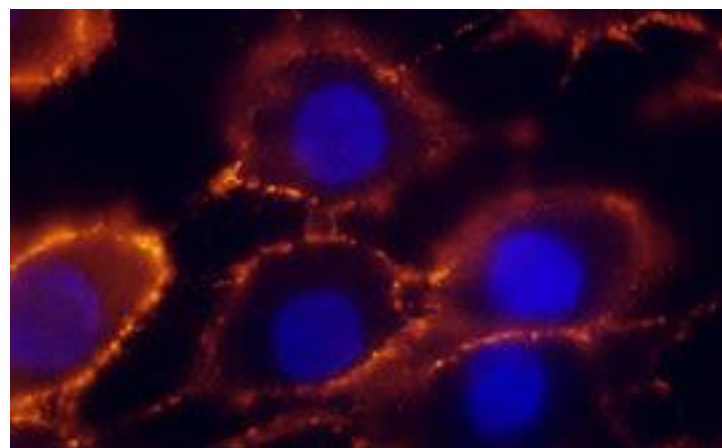


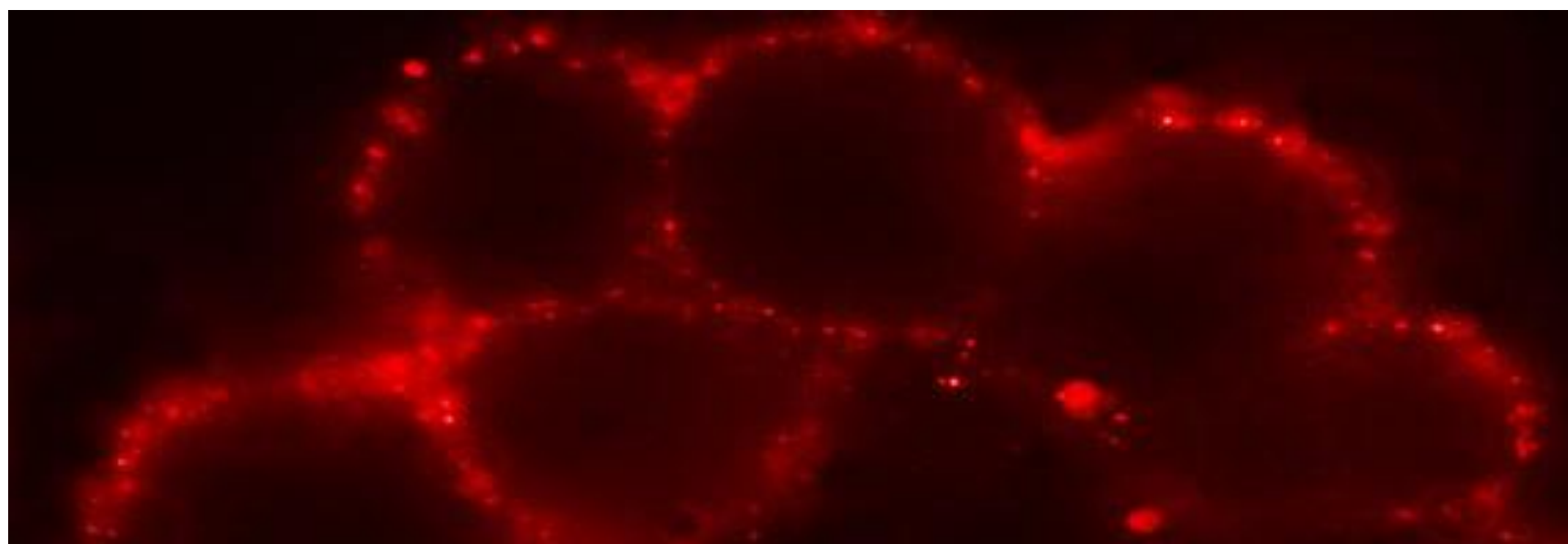
Alomone Labs está empenhada em desenvolver reagentes de ponta para a visualização de canais iônicos em imagens de células vivas. Para isso, estabelecemos uma linha de anticorpos reconhecendo epitopos extracelulares de vários canais iônicos. Abaixo estão os anticorpos novos ideais para ICC de células vivas..



Immunocytochemical staining of intact living rat PC12 cells. Extracellular staining of cells using [Anti-TRPA1 \(extracellular\) antibody \(#ACC-037\), \(1:50\), \(red\).](#)



Immunocytochemical staining of live intact rat C6 glioma cells. Extracellular staining of cells using [Anti-NMDA Receptor 2A \(GluN2A\) \(extracellular\) antibody \(#AGC-002\), \(1:100\), \(red\).](#)



Expression of Orai1 in HEK-293 transfected cells

Immunocytochemical staining of intact living HEK-293 cells expressing Orai1. Extracellular staining of cells using mouse monoclonal [Anti-Human Orai1 \(extracellular\) antibody \(#ALM-025\), \(red\).](#)