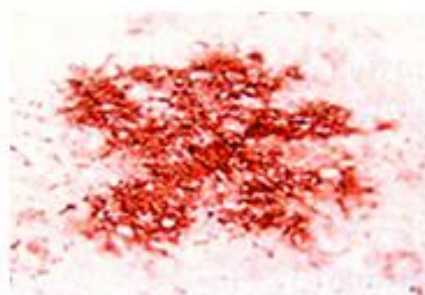


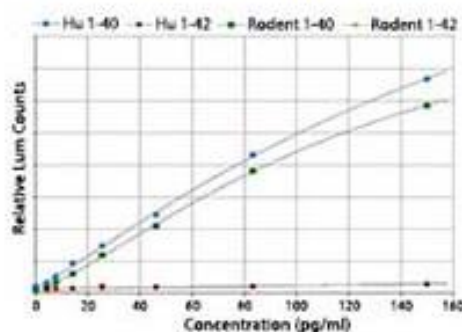


More than 30 million people worldwide have Alzheimer's disease (AD). AD is pathologically characterized by the presence of amyloid-beta ($A\beta$) plaques and tau neurofibrillary tangles in the brain. $A\beta$ is normally found in the CNS as a product of amyloid precursor protein (APP) cleavage, and is usually cleared from the brain before it forms any aggregates. The time that it takes to clear half of the $A\beta$ particles from the brain is strongly correlated with age. High levels of $A\beta$ in the brain result in plaques that are characteristic of AD. The recently found link between aging and the risk of amyloidosis, likely caused by a slowing in the rate of $A\beta$ clearance in the brain, brings forth opportunities for better diagnostic and treatment options for patients with AD¹. BioLegend offers many reagents for the study of protein aggregates such as $A\beta$, α -Synuclein, and tau, in addition to other neuroscience reagents.

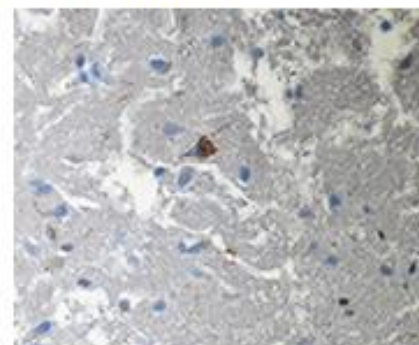
Reference: 1. Patterson BW, et al. 2015. *Ann. of Neurol.* 78:439-53. [Pubmed](#)



Purified anti- β -Amyloid, 1-16 Antibody ([803001](#)). 6E10 immunostaining on brain section of Tg-SweArc transgenic mice.



BetaMark™ β -Amyloid x-40 ELISA Kit (Chemiluminescent, [842101](#)). BioLegend's BetaMark™ 40 kit is specific for the x-40 isoform of beta amyloid. It has negligible cross reactivity with the x-42 isoform of beta amyloid. The BetaMark™ 40 kit reacts with both human and rodent x-40.



Purified anti-Tau, 210-230 Antibody ([806401](#)). Staining of Tau 5 on formalin-fixed paraffin-embedded Alzheimer's Diseased Human brain tissue.

Related Products

$A\beta$ Antibodies

Description	Clone
Purified anti-Amyloid Fibril (pan reactive) Antibody	B10AP
Purified anti- β -Amyloid, 1-42 Antibody	12F4
Purified anti- β -Amyloid PyroglutamyI (Glu3) Antibody	337.48

$A\beta$ Recombinant Proteins and ELISAs

Recombinant Proteins	ELISAs
Recombinant Human β-Amyloid Peptide (1-40)	BetaMark™ β-Amyloid x-40 ELISA Kit (Chemiluminescent)
Recombinant Human β-Amyloid Peptide (1-42)	BetaMark™ β-Amyloid x-40 ELISA Kit (TMB)
Recombinant Human β-Amyloid Scrambled Peptide (1-40)	BetaMark™ β-Amyloid x-42 ELISA Kit (Chemiluminescent)
Recombinant Human β-Amyloid Scrambled Peptide (1-42)	BetaMark™ β-Amyloid x-42 ELISA Kit (TMB)
Recombinant Human APP751	
Recombinant Human APP770	
Recombinant Human sAPPbeta (APP751 isoform)	

